

Companion App Guide

provolver haptic pistol
forcetube haptic gun stock

The Companion App creates a backwards compatibility for SteamVR games to have haptic with our devices, such as the ForceTube or the ProVolver.

We call this **SteamVR compatibility**.

What does it mean?

- 1) This little software will detect when your avatar presses the trigger of your in-game weapon(s).
- 2) It will understand what kind of weapon(s) you are using and do some wizardry (quite a lot of maths and electrical conversion, tbh).
- 3) The Companion App sends a signal to your haptic device(s).
- 4) The device(s) will activate, replicating the recoil and rumble of what's happening on your in-game weapon(s).

What do i need?

You only need the Companion App **if you are using SteamVR on PC**.

If you are playing games directly on your standalone HMD (such as Meta Quest or Pico without PCVR link), our haptic devices are natively compatible with an extensive and ever growing list of VR games.

If you use a Meta HMD with PCVR, you need to changes the runtime. **More info in the FAQ below**.

Compatible games and mods

Through our collaboration with VR game studios, the compatibility and calibration of our haptic devices are directly integrated into games.

This **native compatibility** does not require the use of the SteamVR compatibility feature and is present in over 60 titles across multiple platforms including PC, Quest & Pico headsets. This list of native titles is growing continuously.

In addition to these titles, wonderful modders from the community are adding **mods to enable native integration** into popular games that do not. For games with such a mod, usage of the Companion App SteamVR compatibility feature is not required, just like with native titles. Those mods are only available for SteamVR games (PC).

For PCVR games that are neither native nor have a mod, you need to use the **Companion App SteamVR compatibility** feature.

For PCVR games that are native, you can use the Companion App to finetune your experience.

Check [the native compatibilities page](#) for more details.

[See compatible games on Reddit](#)

Install the Companion App

companion app steam page

1. Go on the [Companion App Steam page](#).
2. Add the Companion App to your Steam library.
3. Install the Companion App from your Steam library, like any other game.
4. Use the created shortcut to start the Companion App.

Companion App instruction manual

General preview

companion app general preview

Vocabulary

- **Device:** The electronic equipment you're connecting to the application.
- **Channel:** A reserved space where you can connect your devices and isolate specific received signals.
- **ms:** Milliseconds.
- **Preset:** A configuration file that contains saved channels and device info.

Left Side panel

Default mode

You have some tabs available by default:

- **Connected Devices**
- **SteamVR**
- **Native and Mods**
- **Haptic Demo**
- **Steam workshop**

Advanced mode

Switching between modes enable/disable advanced features, like assignng custom channels to your device.

- **Connected Devices (advanced)**
- **SteamVR (advanced)**
- **Native and Mods (advanced)**
- **Haptic Demo (advanced)**
- **Valve Index**
- **Steam workshop**

companion app side panel default

companion app side panel advanced

Top bar Widget

Auto-connect

The Companion application will automatically try to connect to the devices remembered by your PC.

Disable this option if you want only some devices to connect.

In advanced mode, the **Stream Plugin** button appears.

companion app top bar

Preset Manager

When launched, the Companion App always loads on the default parameters. If you want to keep your modified settings, you must save it in a preset.

Double-clicking on a preset will load its settings.

Save: Create a new preset with the name in the black text box and saves current configs including:

- Assigned device channels.
- SteamVR settings.
- Native Compatibility Settings.
- Knuckles Fix values.

companion app preset

Saving a setting to an existing preset overwrites it.

If you want to retrieve the default preset, close the Companion App, reopen it, and save the parameters loaded by default in a new preset.

Import: Import a configuration file. You can find shared presets from our Discord community.

Export: Export all saved configurations as a file. You can share it with our Discord community.

Delete: Delete the selected preset.

Connected devices and Channels

What are channels?

To operate, the Companion App catches in-game controllers' vibration signals, converts them and sends them to your devices, making them kick and rumble.

These signals go through Channels.

There are 6 of them. By default, the signal will go through all 6 channels and your device will react.

Why are channels important?

If you have 2 distinct haptic devices, channels allow them to kick separately.

If you'd prefer your haptic devices to kick separately, you need to set each device to a different channel.

Doing so, you would avoid the ProVolver from kicking when you use your ForceTube Rifle, for example.

Or if you have a pair of ProVolvers, and you only want to feel the recoil on the hand holding the gun that's firing it, it's possible by using the channels.

Special channels for some games

A natively compatible game only sends signals to a channel if its developers have set up that specific channel.

Some developers have only set up 1 or 2 channels for their game. If you use custom Channels setup instead of the Default one for these games, you have to select the configured channel.

Automatically assigned channels

Connecting your new device will assign it to a **signal channel automatically in this order:**

RifleButt - RifleBolt - Pistol1 - Pistol2 - Other - Vest

If you connect more devices than the total channel number available, auto-assign will loop back to RifleButt and so on.

Default mode

This is the page you land on when you start the application. By default, you will see each connected device here.

You can click on any device card to change its type, and the application will remember which device is what.

Advanced mode

In advanced mode, you have a Channels button appearing under each device.

Clicking on this button will bring-up a menu where you can manually assign channels to your device.

It is important for some games and/or if you have several haptic devices.

companion app connected devices default

companion app connected devices advanced view
companion app connected devices advanced

SteamVR

Customize the SteamVR Compatibility Feature.

If you use a Meta HMD with PCVR, you need to change the runtime. **Every step in the FAQ.**

Default mode

Listen Events: Whether you want your channel to react when your left/right hand triggers an haptic event.

Kick Power: Controls the kick power of your devices.

Kick Threshold: Adjust this variable to control required power for SteamVR events to trigger your device kick response. Each game has different values defined by the developers, you will have to do some testing to get a good result.

Rumble Threshold: Adjust this variable to control required power for SteamVR to trigger your device rumble response.

companion app steamvr compatibility

Advanced mode

Start by selecting a channel and tweak your settings from here.

Make sure your device is in the right channel by checking in your channel manager. You can also use the "Identifier" command below.

Identifier: Sends a kick command to the selected channel.

Tips: If identifying a channel does not result in any connected device kicking, it probably means that no device has that current channel assigned. A device is considered connected if its battery displays a percentage superior to 0.

companion app steamvr advanced

Interpret as kick / Interpret as rumble: If you want your right or left controller events being interpreted as a kick, rumble or both.

Shots Delay: Limits the reaction rate of your devices. *Avoids triggering event bursts on each in-game interaction.*

Minimum Rumble Duration: Controls the duration between each vibration.

companion app steamvr advanced all channel settings

Haptic demo

Default mode

Mainly used to simulate different types of weapons.

- Sniper : Kick with vibration.
- M16: Launches a salvo of 3 consecutive kicks.
- PKM: Continuous burst of kicks and rapid vibration.
- P90: Continuous burst of rapid kicks.
- Laser: Vibrates to charge the shots, then kicks after charging.

companion app haptic demo default

Advanced mode

Start by selecting a channel and tweak your settings from here.

Make sure your device is in the right channel by checking in your channel manager.

Identifier: Sends a kick command to the selected channel.

Tips: If identifying a channel does not result in any connected device kicking, it probably means that no device has that current channel assigned. A device is considered connected if its battery displays a percentage superior to 0.

companion app haptic demo advanced

Custom Single Shot: Shoots once using specified parameters in below sliders.

Custom Auto Shot: Shoots using specified parameters and loops based on frequency slider.

Kick Power: Controls the kick power for demo mode.

Rumble Power: Controls the rumble power for demo mode.

Rumble duration: Controls the rumble duration on each shot. Max is 500 ms.

Autoshots Frequency: How many times per second you want to shoot with Custom Auto Shot for the demo mode.

companion app haptic demo custom shoot

Native and Mods

On PCVR, if you are playing a native game or a game with integration enable by a mod, you can customize your inputs.

These games do not need the Companion application to work, but it will allow you to finetune some settings if you have the need to.

Make sure to connect any desired device to the app first, and then start your game.

Default mode

By default, your device will listen to all channels at once ensuring most of the compatibility.

For each of the below parameters, refer to this chart:

- 0% : No power
- 100% : Original game power
- 200% : Double original power

Kick Power: Controls the kick power percentage.

Rumble Power: Controls the rumble power percentage.

Rumble duration: Controls the rumble duration percentage for each shot.

companion app native mods default

Advanced mode

Start by selecting a channel and tweak your settings from here. This allow your devices to kick separately.

Make sure your device is in the right channel by checking in your channel manager.

Identifier: Sends a kick command to the selected channel.

Tips: If identifying a channel does not result in any connected device kicking, it probably means that no device has that current channel assigned. A device is considered connected if its battery displays a percentage superior to 0.

*companion app native mods advanced
companion app native mods advanced all channel settings*

Special Channel Settings

Your devices need to use the correct channels set by the developers for customization to take effect.

For the following games, make sure your Haptic devices are set in the right channels when enabling Native Customization.

If a game on this list doesn't work, search and enable ForceTube settings in your game menu.

If your native or mod-compatible game doesn't appear on this list, you will have to find the used channels via trial and error.

Any game that is not native or mod-compatible will work with **SteamVR compatibility**.

Dead Second	Pistol1	Onward	RifleButt RifleBolt
Surv1v3	Pistol1	Contractors	RifleButt RifleBolt
Cactus cowboy Plants at War	RifleButt RifleBolt	Tales of Glory 2: Retaliation	RifleButt RifleBolt
Cactus cowboy 3 Fully loaded	RifleButt RifleBolt	Vertigo 2	RifleButt RifleBolt
Hotdogs Horseshoes and Handgrenades	RifleButt RifleBolt	Gun club VR	RifleButt RifleBolt
Larcenauts	Pistol1 Pistol2	Warchasm (no Companion App customization available)	Akimbo out of the box
Resist (enable parameter in game settings)	Pistol1 Pistol2	Gambit ! (Pistol only, right hand only. Start the Companion app after the game connects to the devices)	Pistol2

Valve Index with Knuckles

A few players using a Valve Index HMD and its Knuckles have reported us their in-game hands fly away while shooting in long burst.

We have developed a driver to fix this.

The driver does not work with other headsets; only Valve Index might need it. If you don't own a Valve Index headset or your in-game hands don't fly away while using the Knuckles controllers with your Index HMD, you can skip this section.

Install the driver

1. Close the Companion-App and shut down VR if it's been turned on.
2. Go to your Companion App installation folder.
3. Open the folder "Valve-Index-Knuckles-driver".
4. Install the driver.
5. Restart the Companion App.
6. Enable Advanced mode.
7. Go to Valve Index tab.
8. Enable the feature with the toggle button and tweak the sliders to your preferences.

Uninstall the driver

1. Go to the folder "C:\ Program Files (x86)\ Steam\ steamapps\ common\ SteamVR\ drivers".
2. Delete the folder "ProtubeDriver1".

Finetune your Knuckles settings

Additional help :

1. Try to reduce the kick power produced by the mode you're currently using (either SteamVR or Native/Mods).
2. Extend the Shots delay.
3. Reduce the rumble duration.
4. Don't forget to save your configuration.

Accelero Max: Limits max acceleration of your in-game hand.

Freeze Duration: How much time your hand gets frozen after a kick if it hits max acceleration.

companion app valve index knuckles fix settings

Steam Workshop

You can download and share presets with the community with the [Companion App's Steam Workshop](#).

This page lists all items you've previously subscribed to for the Companion-app.

You can search for a specific item in your list using the search bar.

Importing presets

If you don't have any items yet or want to open the application workshop in a single click, you can press the "Open Workshop" button.

After subscribing to an item from the steam application, you might have to restart the Companion-application to see newly added items.

To import a subscribed item into the preset manager, click the "Import Preset" button.

Your preset will be imported, and the button will change its status to "Imported".

To unsubscribe and delete the item from your computer, click the "Unsubscribe" button.

Exporting your presets

To export your presets and upload an item:

1. Start by preparing a folder outside the Companion-application. The folder will be your item uploaded on Steam Workshop.
2. If it's not already done, export your desired preset to the folder, or move the preset to that folder.
3. When your folder is ready and you've put all your files inside, open the Editor in the Companion-application.
4. Fill in the required fields.
5. Precise your prepared folder location.
6. Import an image that will represent your content.

companion app steam workshop editor

companion app steam workshop page

Steam Workshop Editor

In advanced mode, you can upload your own items after clicking on the "Workshop Editor" button.

You can upload a new item every 15 minutes but if you need to modify an existing one the delay is shorter (no delay on lightweight items).

Your item can be reported and will be removed from the Workshop if it doesn't respect [Steam guidelines](#).

Edit existing item

If you want to edit an existing item belonging to you, you will have to specify its ID.

Your Item ID is the last numbers in the URL bar of the Steam app workshop, either web or desktop. Example: "https://steamcommunity.com/workshop/filedetails/?id=**3104917878**"

Patch notes: Not required but can provide useful information to users on item updates.

When you're done, click the "Create/Update" button to upload your item on steam.

Streamers Addon

In advanced mode, the top bar contains a "Stream Plugin" button.

This feature is destined for content creators and streamers. It is similar to input overlay for gaming controllers.

With it, you show an icon of your haptic devices on your stream overlay. This icon will blink each time you use it.

Clicking the button opens a browser window.

You can import that browser source inside your favorite streaming software.

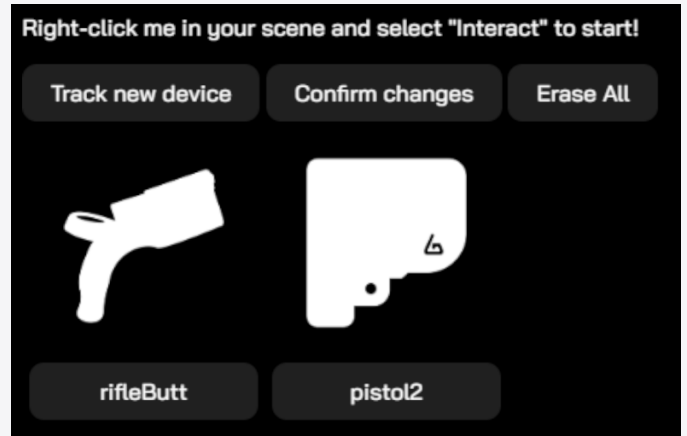
Then, follow the written instructions on the source.

You can change the device type by clicking on the image logo multiple times, and the channel by clicking on the button right under each device.

Once set-up, the tracked devices will be highlighted when a kick is detected.

By confirming changes, you save the current settings for your next broadcast sessions.

When you erase all, your saved configuration will be cleared.



FAQ and Troubleshooting

[I want to set up my 2 devices for SteamVR](#)

1. Make sure Advanced mode is disabled (the button should be gray).
2. Make sure both of your devices are connected to your PC by going into the side panel option "Connected Devices". If you see 2 cards with a battery percentage above 0, you're set.
3. Now, go to SteamVR tab below.
4. There should be 2 toggle buttons present on the menu. Make sure they're ticked "on".
5. Enable the SteamVR tab's toggle button.
6. Fine-tune your SteamVR settings.
7. Create new presets and save them through the preset manager (top right) if you want to keep your settings for your next sessions.

I want my 2 devices to kick separately in Steamvr mode

1. Make sure both of your devices are connected to your PC by going into the side panel option "Connected Devices". If you see 2 cards with a battery percentage above 0, you're set.
2. Enable the Advanced mode. The "Connected Devices" panel becomes "Channel Manager". You can manage signals by channel.
3. Go to SteamVR tab below.
4. Disable the listen events on "All" channel.
5. If you didn't change manually your channels, your first 2 devices are going to be in RifleButt and RifleBolt (1 device per channel).
6. Make sure you have only 1 listen event side (right or left) enabled on each Channel setting (eg. RifleButt only has Left hand controller and RifleBolt only has Right hand controller).

If your left device shoots on right events:

1. Enable SteamVR tab's toggle button
2. Swap the listen event between the 2 channel settings.
3. You should be all set up.

If your devices still don't kick although they display percentages:

1. Note in which channels you just enabled your parameters.
2. Assuming you are still in Advanced mode, navigate to "Channel manager" tab.
3. There is an orange button under each of your devices.
4. Ensure that each device's assigned canal corresponds to the ones you just set up in the SteamVR tab.

How can I reduce the kick or rumble of natively compatible games or mods using the companion-app?

1. Launch the Companion App first, then your game.
2. If you didn't set channels manually go directly in the "Native and Mods" tab.
3. Adjust the sliders until you have a good result while testing in-game.
4. Save your configuration as a preset so you can keep it for your next session.

Pistol1 is not always Left hand

Pistol1 may not always be set as the left hand, and which gets assigned to it depends on which device paired first to the game.

Games that have Pistol1 + Pistol2 usually have an "invert channel" or "swap hands" option in the settings allowing you to change which hand your 2 ProVolvers are assigned to.

More than 2 devices kicking at the same time impossible

It is only possible to use a maximum of 2 devices at a time.

If one tries to pair 3 devices or more, only the first 2 devices paired to a game will receive informations. The remaining will receive nothing even if they pair to the game.

In some games, pairing more than 2 devices will result in interrupting the pairing process of the "additional device".

More than 2 devices and game crashes with Companion app

Some native or modded games simply don't work with the Companion App at all when using 2 devices.

If the Companion App is already running, affected games may crash or won't launch properly.

If one launches the Companion App after a game is running, it may still crash, or haptic device constantly pair over and over.

Even if none of these occur, any changes made to the game's haptic events will not apply no matter what.

Device history with modded games

To use any mod on PC, you must have a maximum of 2 devices paired for a game to transmit haptic signals to a devices properly.

The game cannot know if your paired devices are on or off. So there is a risk that a signal is sent to an off device. To be safe, unpair any unused devices from the Bluetooth menu.

bHaptics & ProTubeVR haptics on PC

The ForceTube and ProVolver only work with Bluetooth 4. They are not compatible with Bluetooth 5 dongles. They can work, according to some customers, on Intel chipset WiFi+BT (specifically AX200, AX210, AX220) which can be found directly on some motherboards, or bought as PCIE adapter cards. Also, they do not work well with Realtek chipset in any capacity.

There is always a risk that those do not work, so be aware.

The Bluetooth 4.2 dongle we provide runs a Qualcomm chipset. It does not have the capability to let you run both a ForceTube or ProVolver & a bHaptics product simultaneously.

Newest bHaptics products come with a Bluetooth 5 dongle that runs on a Realtek chipset. They used to come with a Bluetooth 4 dongle that let users run both ProTubeVR and bHaptics devices simultaneously.

bHaptics products still work with BT4.0 (according to their website).

The solution is to find a Bluetooth dongle that can let both ForceTube/ProVolver & bHaptics work at same time.

DISCLAIMER:

Please keep in mind that none of the solutions proposed under are certified to work. The provided Bluetooth 4 dongle we provide is certified to work with any ProTubeVR's haptic devices. bHaptics being a different company and using a different technology, we ask you not to expect a magical working solution.

- 1 - Get which Bluetooth 4 dongle bHaptics used to provide with their products and acquire it.
- 2 - Find a Bluetooth 4 dongle that is not Realtek. It may take tries and errors to find one that works well with both ProTubeVR and bHaptics devices. Asus USB-BT400 and TP-Link UB400 dongle has been reported to work!
- 3 - For users with onboard Bluetooth from motherboard or PCIE Card that is Intel Chipset AX200, AX210, or AX220. Make sure to install WiFi antenna even if you don't use WiFi, because it boosts BT signal strength.

Note: Bluetooth transmitters have a limit on how many devices can be actively paired simultaneously. This means it is not possible to use every single bHaptics product while also using 2 of our haptic devices (ForceTube+ProVolver, or 2X ProVolver).

Revision #11

Created 28 March 2025 15:17:41 by Sephooth

Updated 30 October 2025 15:16:06 by Sephooth